



**MANJEERA**  
Life Elevated

MANJEERA  
**majestic**  
COMMERCIAL  
FLOOR PLANS





### MANJEERA MAJESTIC COMMERCIAL

- 9 floors of commercial space
- 3 floors of shops and showrooms: 500 sft. onwards
- 6 floors of office space: 1300 sft. onwards

### CUTTING EDGE BENEFITS

- Convenient sizes with scalability options
- First commercial project in Kukatpally with new age infrastructure
- First high street retail space with international ambience
- Fabulous facade and frontage with central atrium
- Large storefronts and glazing areas for retail units

## PropServe

### SPACE MAINTENANCE SOLUTIONS

Value added services include finding tenants, documentation, collecting and depositing rent, arranging for resale of property, monitoring payment of utility bills, property tax etc.



## SPECIFICATIONS

### Structure

RCC framed structure with large column free spaces

### Super Structure

Walls with AAC block and cement mortar

### Plastering

Smooth sponge finish in cement mortar, for internal and external walls respectively

### Paints

External walls possess textured paints/acrylic emulsion/ACP cladding/ structural glazing finish. Internal walls have a plastic emulsion finish over a smooth surface

### Doors

Wooden door frames with flush shutters

### Windows and Ventilators

Structural glazing/powder coated aluminum windows / glazing

### Flooring

- Entrance lobbies have a combination of granite and vitrified tiles
- Corridors have vitrified tiles
- 60mm thick IPS flooring inside the office
- Toilets have Anti-skid ceramic rustic tile flooring/ceramic tile dado up to door height
- Staircase and Service rooms have a flooring and skirting with Kota stone

### Toilets

Standard sanitary ware in white color standard CP fittings

### False Ceiling

Lobbies and corridors are provided with false ceiling with light fixtures

### Fire Protection

Automatic fire detection, fire fighting and smoke management system - all as per DGFS/national building codes.

### Centralized Air-conditioning

High side air-conditioning for all offices, completed with high side and low side for corridors and lobbies

### Electrification

- Metered power supply for each office
- 100% DG back up with auto mains failure

### Communication System

- Provision of two telephone connections for every shop and office wi-fi environment for internet
- Intercom with the security and all other important spaces within the building

### Green Technologies

- Sewage treatment plant
- Zero discharge
- Rain water harvesting and recycling
- Use of green construction materials and technologies Irrigation system for landscaping using STP water

### Building Maintenance System

IBMS for optimal and effective maintenance

### Vertical Transportation System

- High speed elevators
- Escalators in shopping floors
- Separate elevators for parking floors
- Dedicated Goods/Service Lifts

### Vehicle Parking

- 3 basements for parking
- Provision for 2-tier mechanical parking in Basement-1

### Security Systems

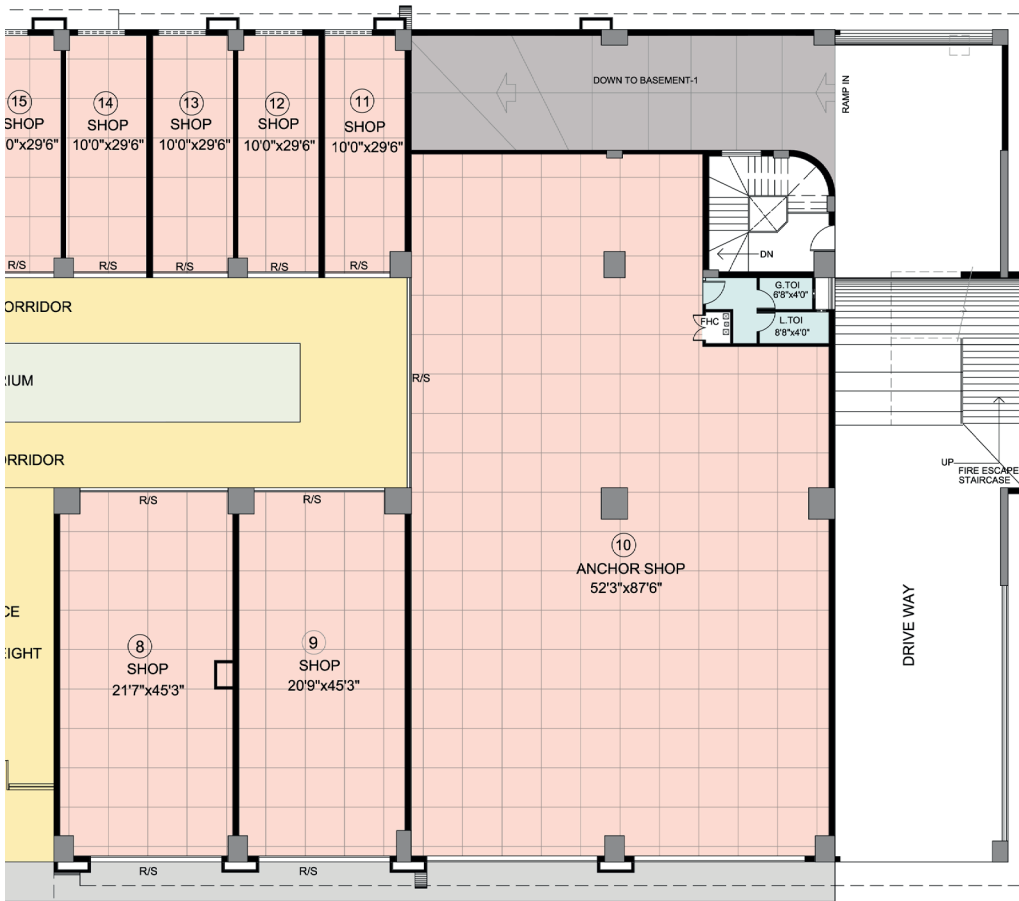
CCTV/Surveillance cameras at all entry and exit points of the building

# SPECIFICATIONS

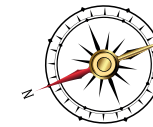


**GROUND FLOOR PLAN**

Shop No.	1	2	3	4	5	6	7	8	9	10	11	12	13	14
Area in sft.	6794	1438	1520	1520	1438	1422	1508	1520	1438	6453	477	477	477	477

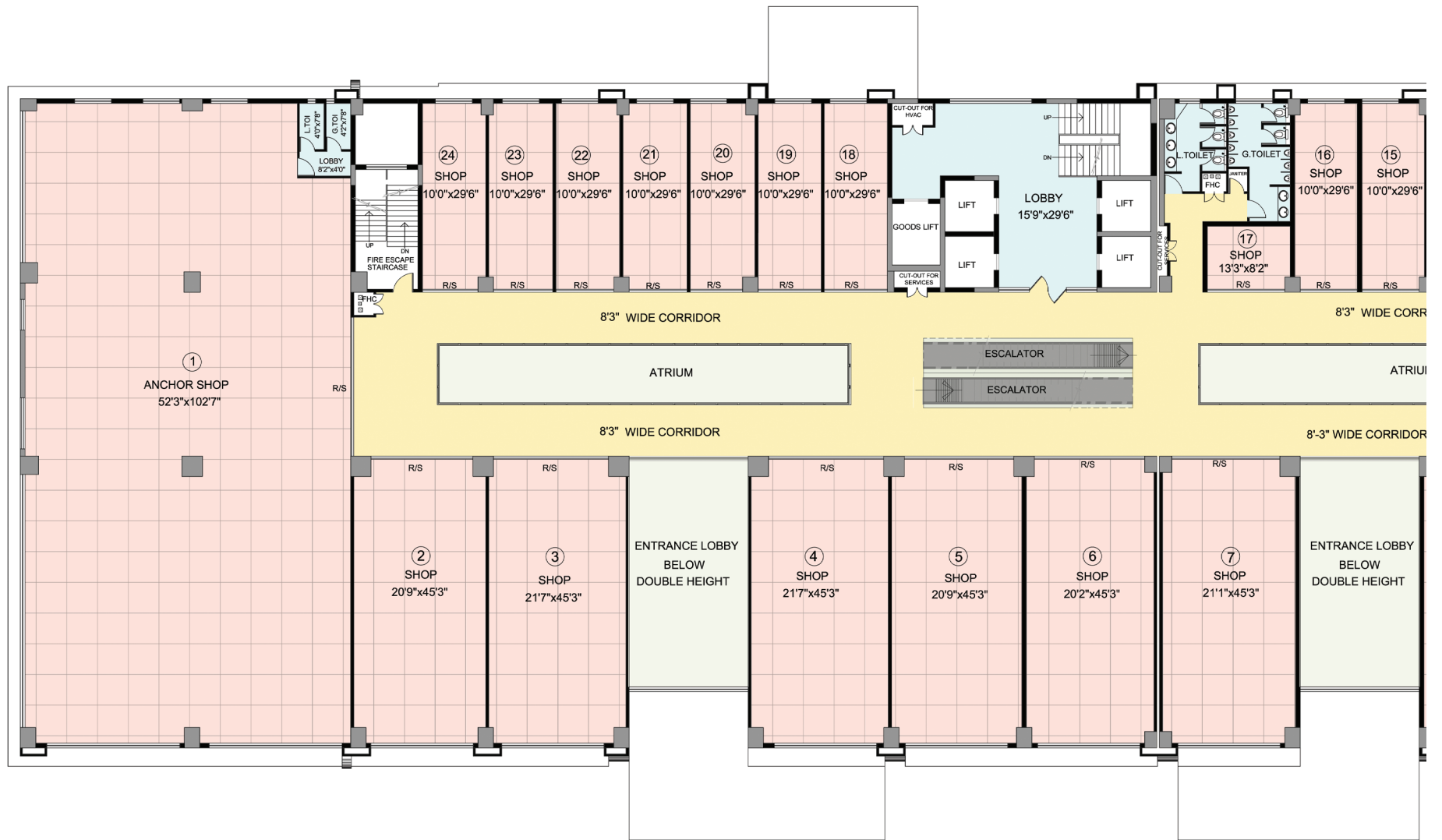


MANJEERA  
**majestic**  
 COMMERCIAL  
 JNTU-Hitec City Road



NG  
Y

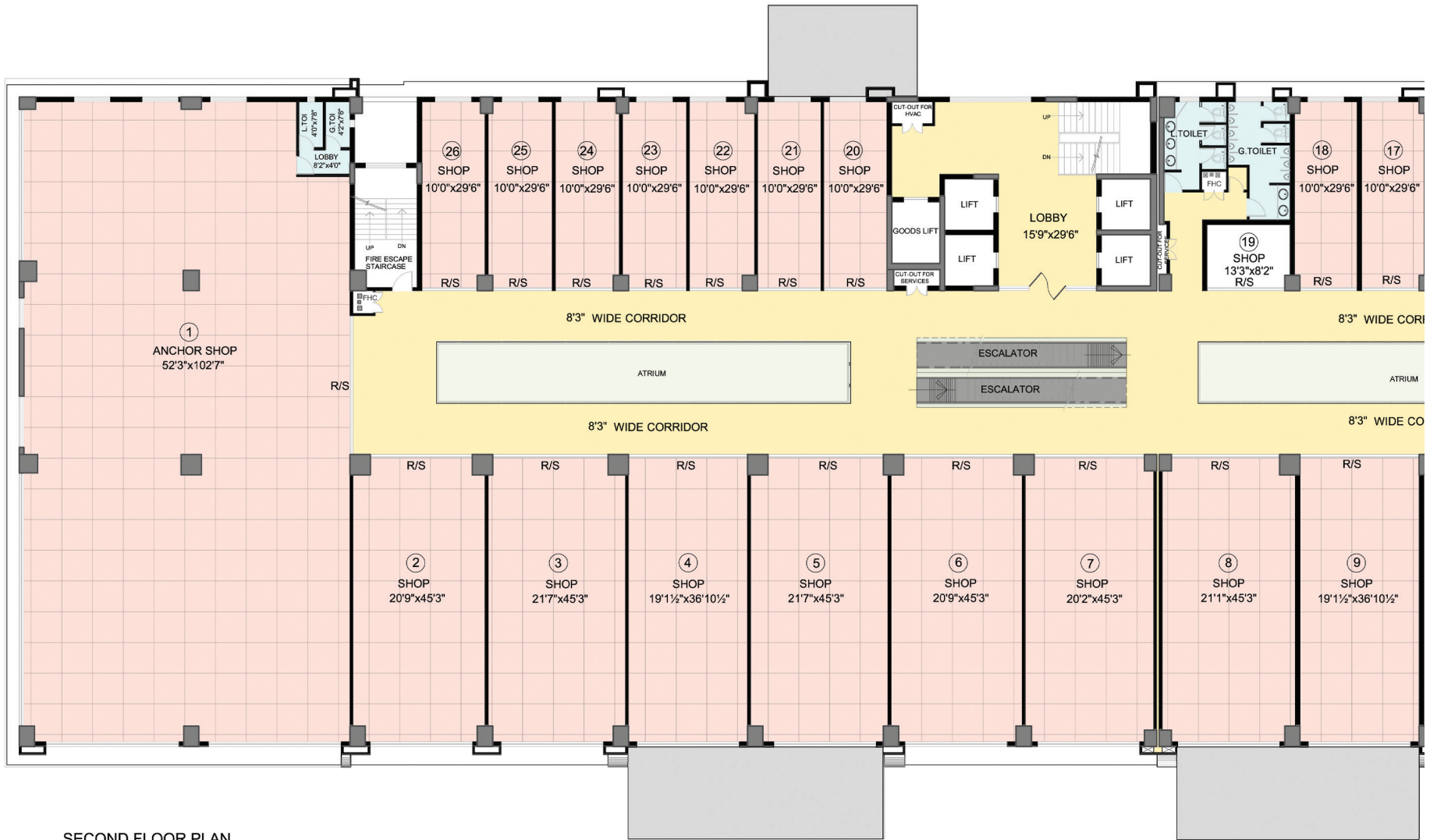
15	16	17	18	19	20	21	22	23
477	477	221	477	477	477	477	477	200



FIRST FLOOR PLAN

Shop No.	1	2	3	4	5	6	7	8	9	10	11	12	13	14
Area in sft.	7944	1438	1520	1520	1438	1422	1508	1520	1438	10722	477	477	477	477





SECOND FLOOR PLAN

Shop No.	1	2	3	4	5	6	7	8	9	10	11	12	13	14
Area in sft.	7944	1438	1494	1324	1494	1438	1422	1483	1324	1494	1438	10722	477	477

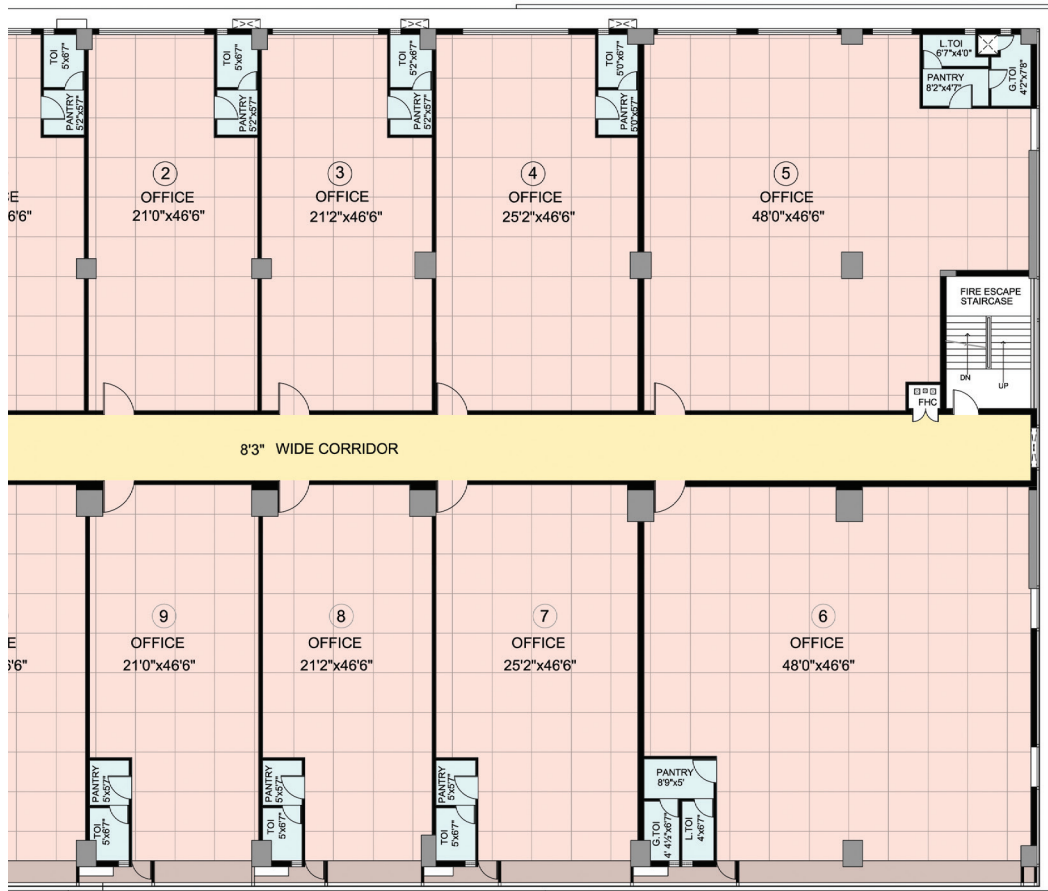




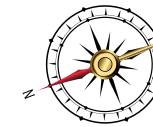


3rd & 4th FLOOR PLAN

Office No.	1	2	3	4	5	6	7	8	9	10	11	12 & 13	14	15
Area in sft.	1356	1356	1356	1626	2847	3101	1626	1356	1356	1356	1345	2698	1356	1356



■ MANJEERA ■  
**majestic**  
 COMMERCIAL  
 JNTU-Hitec City Road

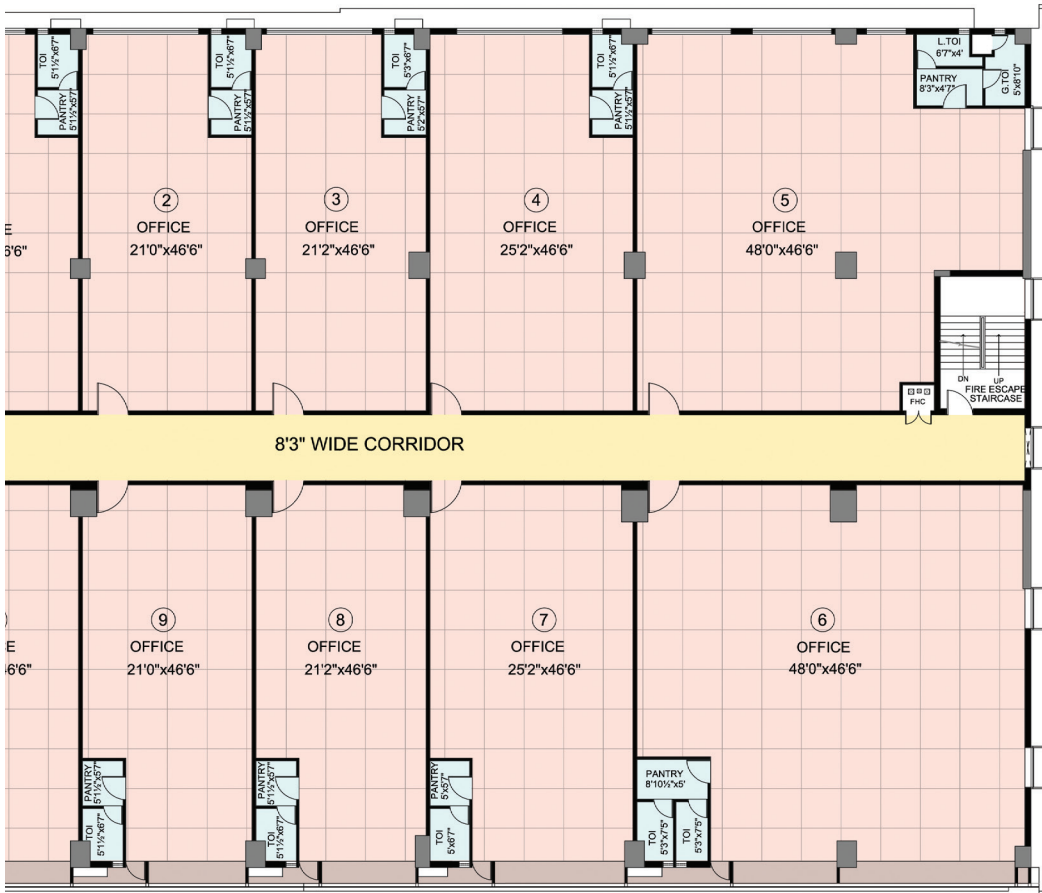


16	17	18	19	20	21	22
1356	1356	3362	3386	2059	1356	1356

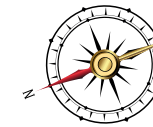


FIFTH FLOOR PLAN

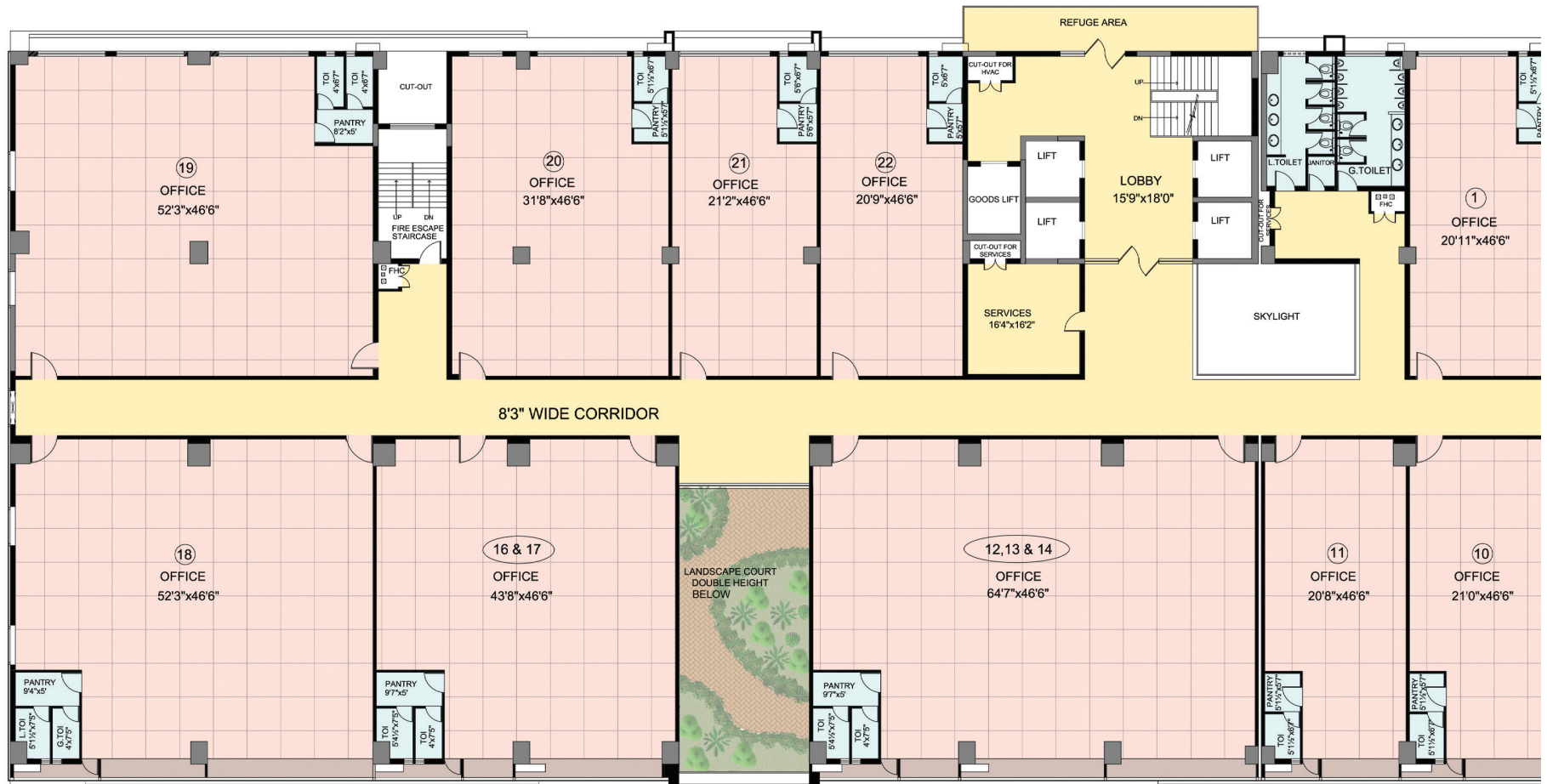
Office No.	1	2	3	4	5	6	7	8	9	10	11	12, 13 & 14	16 & 17
Area in sft.	1356	1356	1356	1626	2847	3101	1626	1356	1356	1356	1345	4131	2790



■ MANJEERA ■  
**majestic**  
 COMMERCIAL  
 JNTU-Hitec City Road

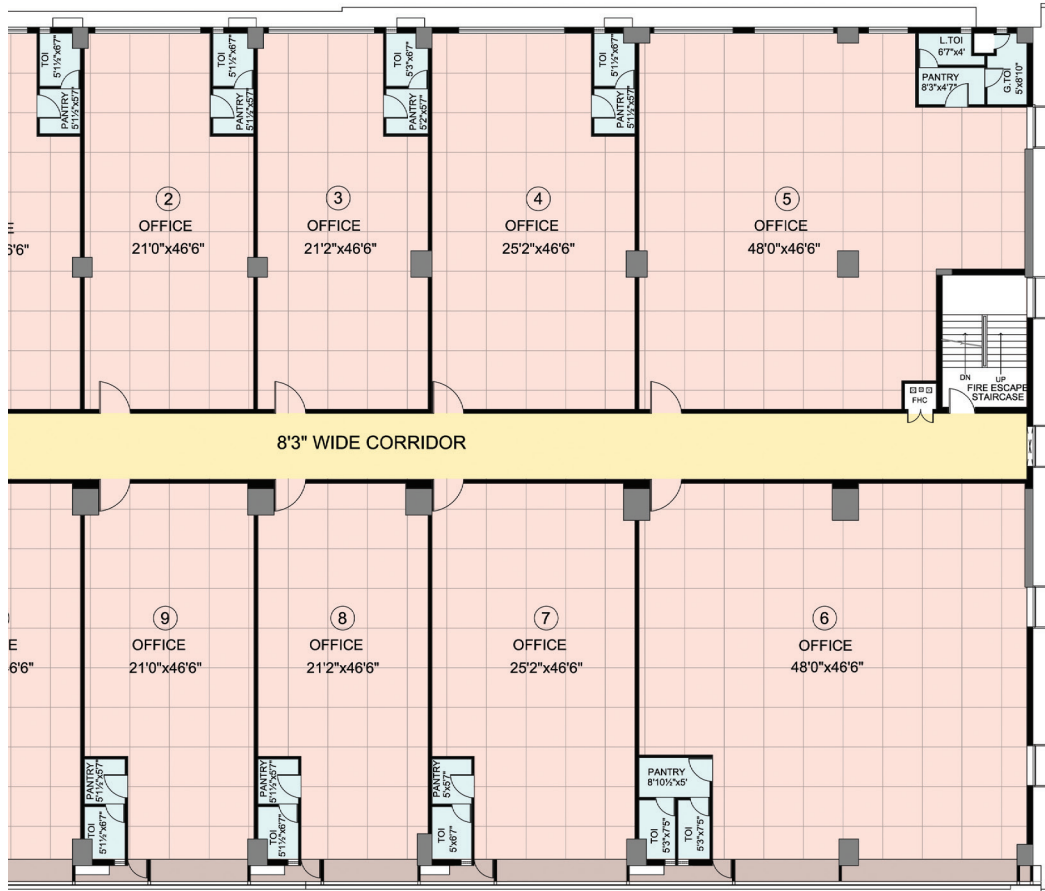


18	19	20	21	22
3362	3386	2059	1356	1356



**SIXTH FLOOR PLAN**

Office No.	1	2	3	4	5	6	7	8	9	10	11	12, 13 & 14	16 & 17
Area in sft.	1356	1356	1356	1626	2847	3101	1626	1356	1356	1356	1345	4131	2790



**MANJEERA**  
**majestic**  
 COMMERCIAL  
 JNTU-Hitec City Road



18	19	20	21	22
3362	3386	2059	1356	1356



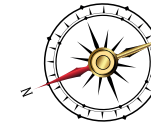
SEVENTH FLOOR PLAN

Office No.	1	2	3	4	5	6	7	8 & 9	11	12 & 13	14	15	16	17
Area in sft.	1356	1356	1356	1626	2847	3101	1626	2790	1345	2801	1356	1356	1356	1356





■ MANJEERA ■  
**majestic**  
 COMMERCIAL  
 JNTU-Hitec City Road



18	19	20	21	22
3362	3386	2059	1356	1356



**EIGHTH FLOOR PLANS**

Office No.	1	2	3	4	5	6	7	8 & 9	11	12 & 13	14	15	16	17
Area in sft.	1356	1356	1356	1626	2847	3101	1626	2790	1345	2801	1356	1356	1356	1356



MANJEERA  
**majestic**  
 COMMERCIAL  
 JNTU-Hitec City Road



18	19	20	21	22
3362	3386	2059	1356	1356

Manjeera Retail Holdings Pvt. Ltd.  
# 304, Aditya Trade Centre  
Aditya Enclave Road, Ameerpet,  
Hyderabad - 500 038, AP, India.  
Fax: +91-40-2373 3763  
E-mail: [marketing@manjeera.com](mailto:marketing@manjeera.com)

[www.manjeera.com](http://www.manjeera.com)

**CALL: 6617 6617/4417 4417**

Architects:

**MATRIX CONSULTANTS**

Note: This brochure is only a conceptual presentation of the project & not a legal offering.  
The promoters reserve the right to alter and make changes in elevation, specifications and plans as deemed fit.